

THE PINES

at Bousquet Mountain

This new luxury townhome community – currently under construction – is comfortably nestled at the foot of the historic Bousquet Mountain Ski Resort.

**Only 10 minutes from Tanglewood.
Close to all Berkshire County attractions.**



- 3 to 5 bedrooms
- 2 to 3 baths
- Maintenance free living
- Lovely common grounds
- Fireplaces
- Central Air
- 2-car garages
- Oversized open decks

**Furnished Model Open Daily
Call for more details (800) 570-0597**

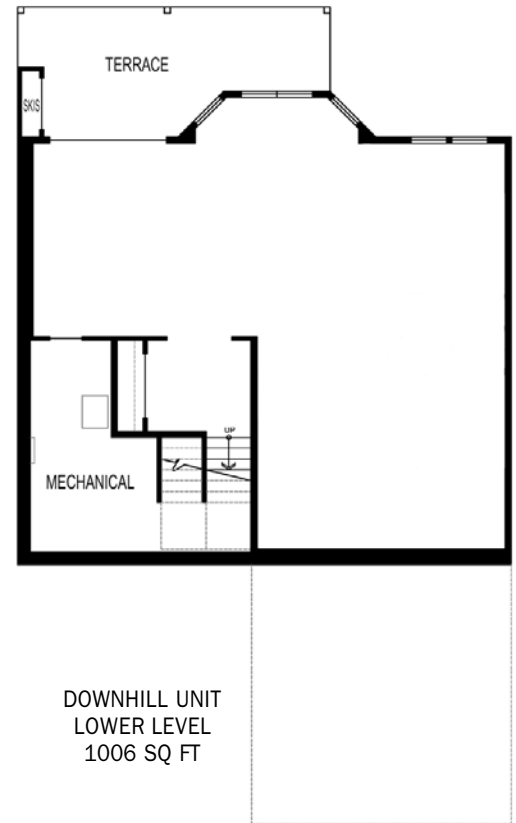
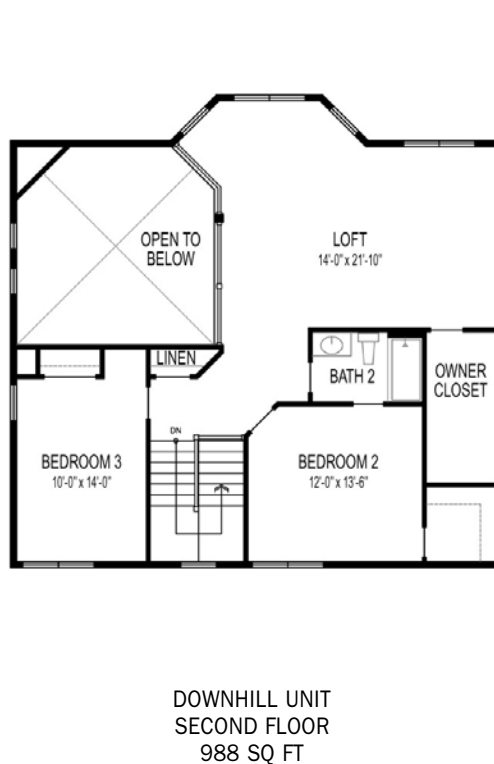
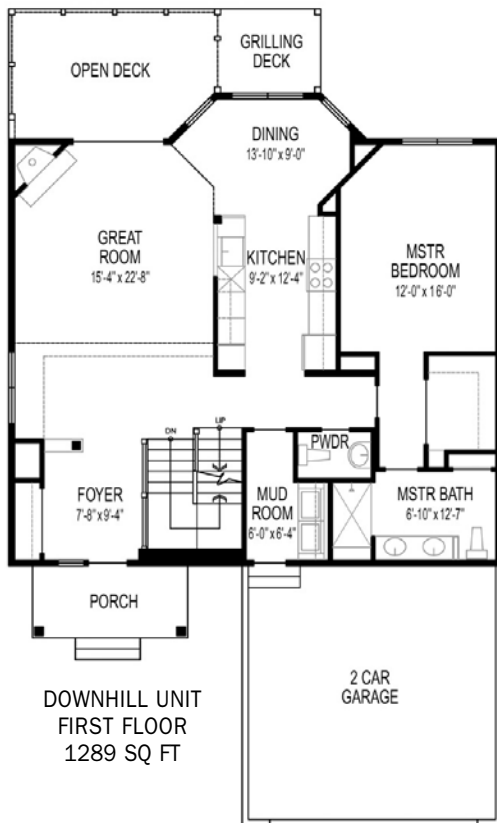
THE PINES

at Bousquet Mountain



Centrally located near skiing, golfing, hiking, boating, cultural and historic destinations, shopping, hospital care, schools and major employment centers.

DOWNHILL UNIT



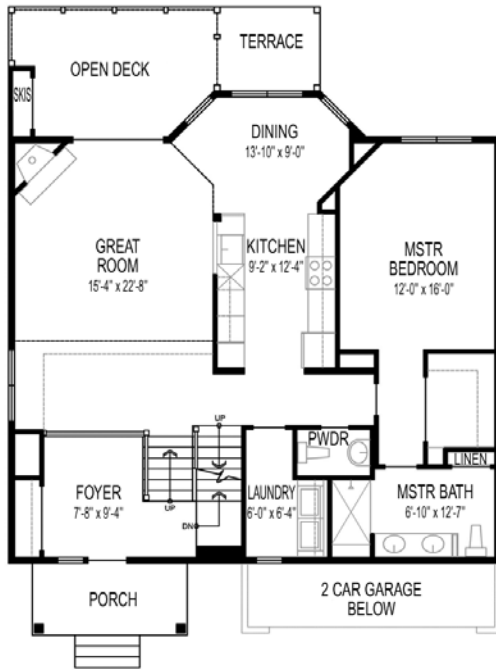
FEATURES

- Hardwood or ceramic tile floors in kitchen, breakfast area & foyer
- Corian countertops and sink in kitchen
- Ceramic tile floors in laundry room & bathrooms
- Quality Stainmaster carpet in great room & all bedrooms
- Upgraded baseboard molding
- Cultured marble vanity tops in all bathrooms
- 18'-high volume ceiling in great room
- 9'-ceiling on main floor
- 8'-ceiling on 2nd floor
- Quality appliances including: range, dishwasher, refrigerator with ice maker, self-cleaning oven, microwave, in-sink garbage disposal, washer & dryer
- Pre-wired for cable TV, telephone & security
- European-style cabinets in kitchen
- Oversized 2-car garage with automatic door opener
- Mirrored closet door in master bedroom
- Vinyl-coated closet shelving
- Electronic smoke detectors
- 200-AMP electric service
- Architectural 30-year roof shingles
- Insulated low-E vinyl clad windows
- Quality wood frame 2" x 6" construction
- R-30 ceiling insulation
- R-19 wall insulation
- Forced air heat & air conditioning
- Oversized open deck
- Composite decking material
- 40-gallon quick-recovery hot water heater
- Cement fibersiding with 50 year warranty

AVAILABLE OPTIONS

- Central vacuum system
- Hardwood flooring
- Fans in bedrooms & great room
- Zodiac or granite countertops in kitchen
- Finished lower level with 1 bedroom & 1 bathroom
- French doors
- Screened-in porch
- 3 season porch
- Cultured stone fireplace
- 2nd floor master suite

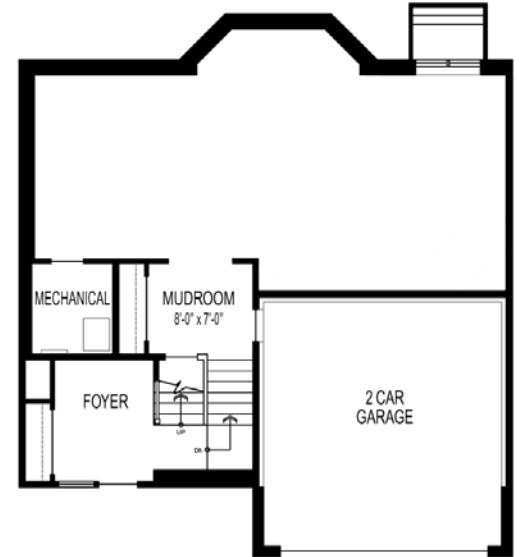
UPHILL UNIT



UPHILL UNIT
FIRST FLOOR
1289 SQ FT



UPHILL UNIT
SECOND FLOOR
1000 SQ FT



UPHILL UNIT
LOWER LEVEL
1006 SQ FT

